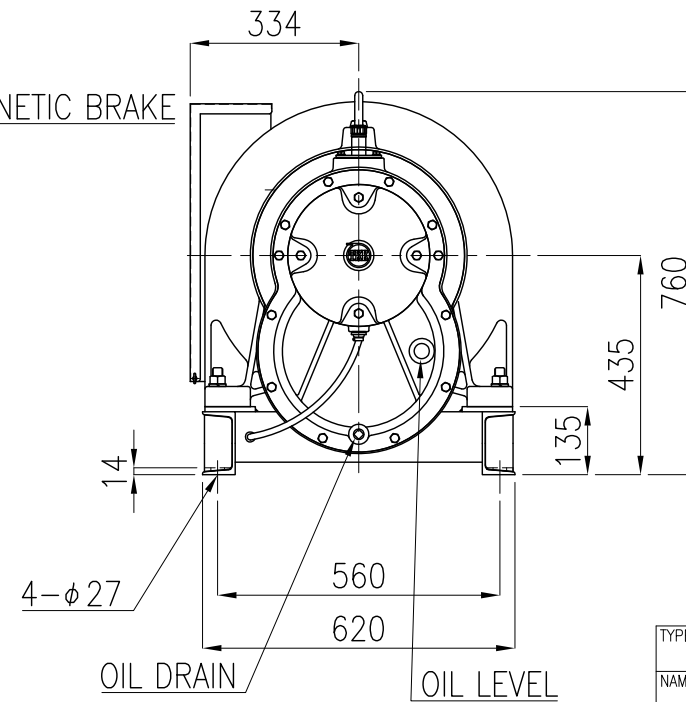
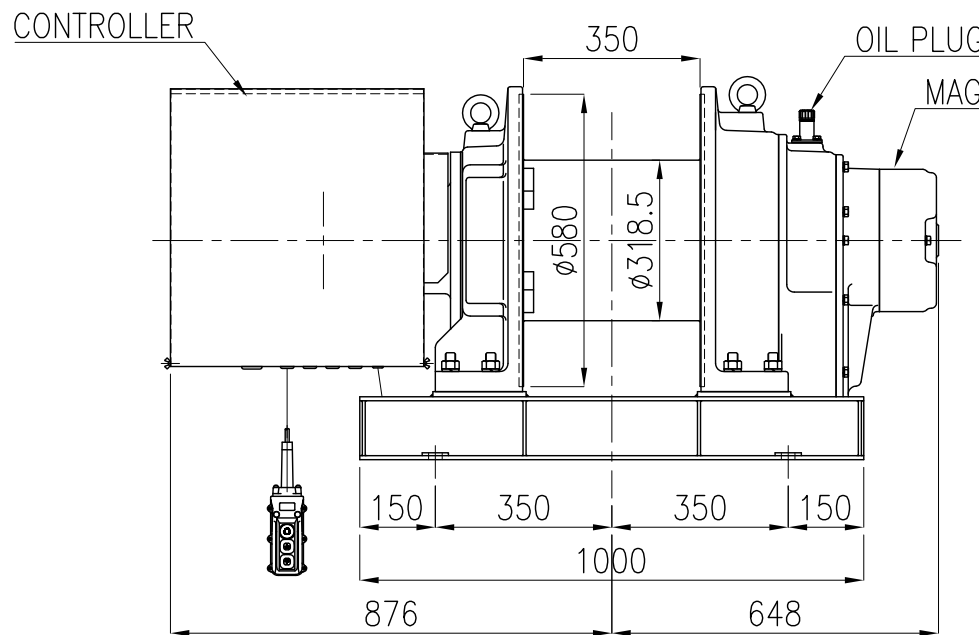


### SPECIFICATION

MODEL	MA-20(S)		
FREQUENCY	50 Hz	60 Hz	
RATED LOAD	1500 kg	1500 kg	
ROPE SPEED	40 m/min	48 m/min	
LENGTH OF WINDING	ø16×180m		
MOTOR	OUTPUT	POLES	VOLTAGE
	15kW	4P	200V
ISO CLASS	M6		
WEIGHT	650 kg		



TYPE	MA-20(S)
NAME	OUTLINE
DRAWN No.	051448 ▲